

## CELL & GENE THERAPY YOUR SOURCE FOR AUTHENTICATED CELL LINES

### Who is CH3 BioSystems?

- CH3 Biosystems (CH3) was founded in 2007.
- Our first sales began in 2008.
- We now make direct sales worldwide, as well as through distribution channels in Europe, the UK, Japan, and Korea.
- Our main focus is biotechnology for cell and molecular research in protein methylation, but our unique authenticated, pathogen-tested clonal cell lines have become a valuable resource for general academic and corporate research, including bio-manufacturing.

### Why license cells through CH3?

Cell and Gene Therapy (CGT) programs have the potential to revolutionize the treatment of devastating diseases. The first significant bottleneck to developing potentially transformative CGT therapeutics for large-scale commercial production is the sourcing of authentic cell lines. Before assuming the challenges of CGT development, it is important to secure the cells used for the bio-manufacturing process from a reliable biotechnology partner with legitimate vested intellectual property and commercial rights to produce and maintain these biological resources.

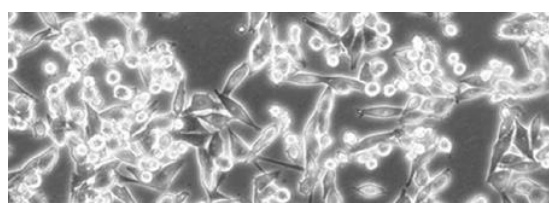


Figure 1: E0771 Cells

### Why choose our cell lines?

The provenance of each CH3 cell line is described in a “Certificate of Cell Line Identity”, which includes the original source of the cell line, its acquisition date and the adaptation of the cell line to standardized production and testing practices developed by CH3 to deliver optimum growth and long-term storage and viability.

Every production lot of each CH3 cell line is authenticated by short tandem repeat genetic profiling and pathogen testing prior to release from inventory. Clients and customers are presented with an individualized, detailed report from our independent bioanalytical testing laboratory.

### What we do differently:

To maintain consistent phenotypic properties for each of the cell lines, the following SOPs are standard practice at CH3:

- Cells are always passaged or frozen in cryo-protectant when culture vessels reach 85 to 90% confluence.
- Cells have never been exposed to trypsin; neither animal-derived nor recombinant.
- Cells are always dislodged from the cell culture surface using trituration.
- Superior technical support including individualized best practice guidelines for the cell culture of each cell line.

### What cell lines can be licensed through CH3 BioSystems?

Well-established CH3 cell lines currently available are:

**HEK293** human embryonic kidney cell line  
**HeLa** human cervical cancer cell line  
**HepG2** human hepatoma hepatocellular carcinoma cell line  
**LNCaP** human prostate cancer cell line  
**PC-3** human prostate cancer cell line  
**PC12** rat pheochromocytoma (original and variant cell lines)  
**E0771** murine breast cancer adenocarcinoma

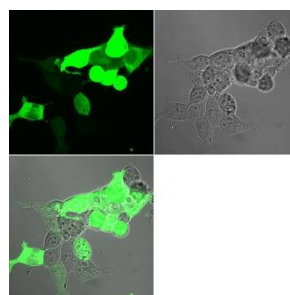


Figure 2: HEK293 Cells

For more information see our website: [CH3Biosystems.com](http://CH3Biosystems.com)

Please contact our offices with any questions 8:30AM-4:30PM EST weekdays:

Phone: +1 716-688-5222

Or

Email: [info@ch3biosystems.com](mailto:info@ch3biosystems.com)